

## In-the-Hoop Sunglasses Case



Keep fashion at your fingertips with a cozy case for eyewear or sunglasses -- made completely in the hoop!

Choose bright fabric for the outside, and fun, flashy print for the backside and inner lining.

Polyester batting adds a protective cushion to guard against scratches, bumps, and bruises.

Supplies needed:

- \*\*10" x 10" low-loft polyester batting
- \*\*2 quarter flats (18" x 22" each)
- \*\*1" sticky-back Velcro
- \*\*Spray adhesive
- \*\*Medium weight tear-away stabilizer

Design Used:

- \*\*In-the-Hoop Sunglasses Cases
  - [Large](#) or [Small](#) (small size used in these instructions).



---

When you download an in-the-hoop sunglasses case design, you'll find three files. One is marked with "\_DLFront" and one is marked with "\_DLBack." These two files are the dielines (DL stands for dieline).

The DL files (dieline files) are outlines, and you'll use these files to make the front and back pieces for the case. The third file begins with the letter "X" followed by 4 numbers -- that is the "full design," the in-the-hoop sunglasses case design.

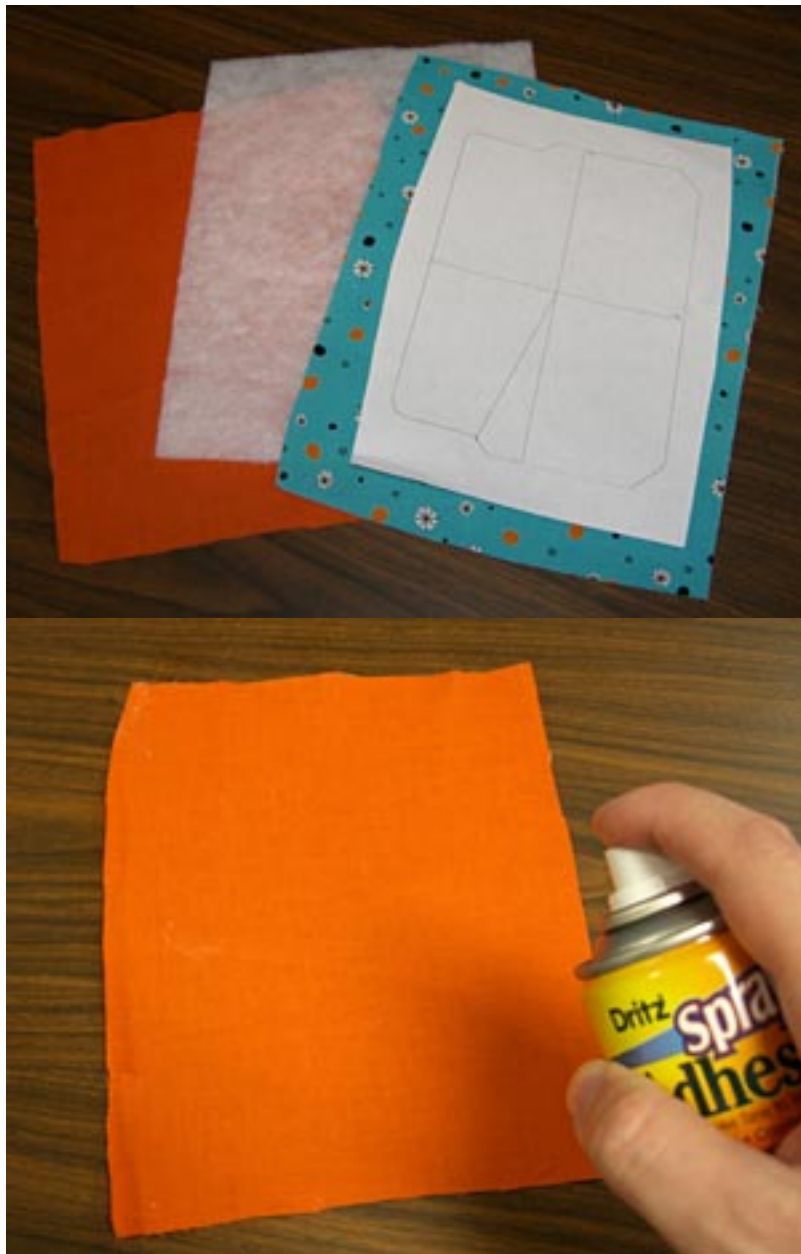
The instructions below will refer to "front dieline" and "back dieline," as well as "full design."

First prepare the front and back sides of the sunglasses case, using the

dielines. If you have embroidery software, open the dieline files and print them. If you don't have embroidery software, then hoop a piece of paper, and embroider the dielines.

The printouts or sewouts of the dielines are "templates" that will be used to prepare the fabric and batting pieces.

---



To make the front piece of the sunglasses case, cut two pieces of fabric and one piece of batting a bit larger than the front dieline. We chose a solid color fabric for the outer fabric, and a print for the inner fabric.

Spray the wrong side of the outer fabric with adhesive.



Smooth the batting onto the fabric.



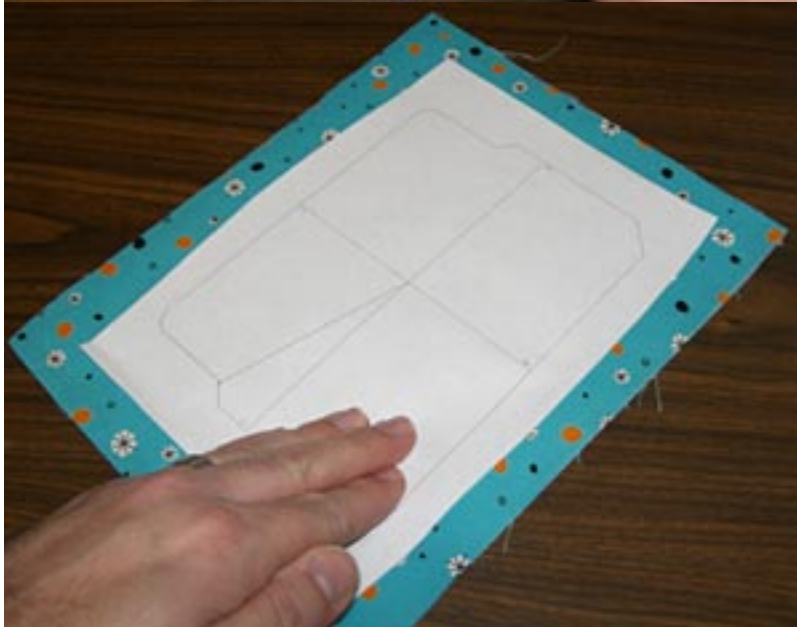
Spray the batting with adhesive.



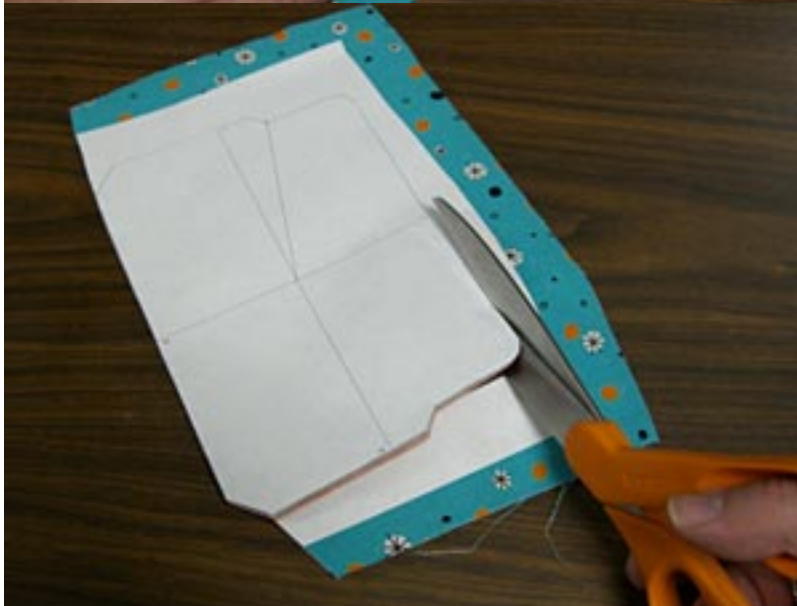
Smooth the wrong side of the inner fabric onto the batting.



Spray the wrong side of the paper template with adhesive.



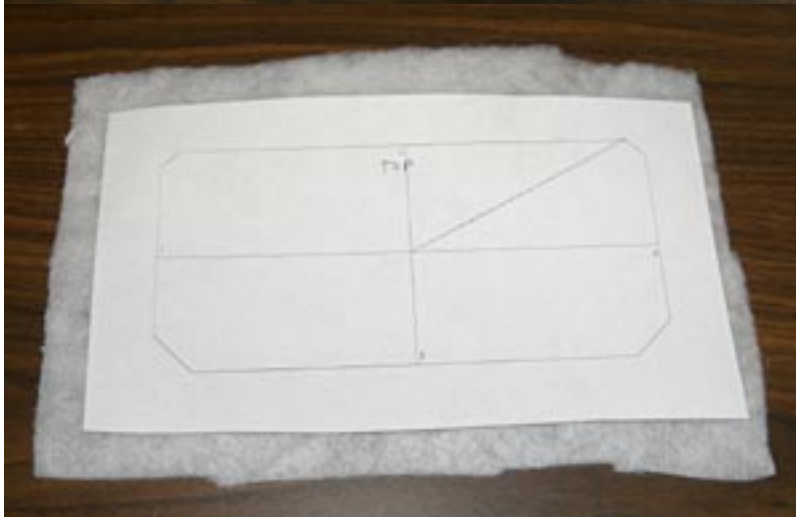
Smooth that onto the right side of the inner fabric.



Cut all four layers -- paper template, inner fabric, batting, and outer fabric -- along the template's lines.



Peel the paper template away, and set aside. This is the front piece of the sunglasses case.



Next, make the back piece. The front piece was a "fabric and batting sandwich." The back piece will be a "fabric and batting taco" with a folded edge.

Cut a piece of batting a bit larger than the back piece template.



The folded side of the "taco" will need a nice, straight edge. Use a straight edge or ruler and mark a line along one long edge.



Cut along the line.



Fold the inner fabric around the batting, and make sure that the fabric covers the batting completely.



Then, unfold the fabric and cut the fabric along the edge of the batting, all the way up the side to the edge of the fabric.



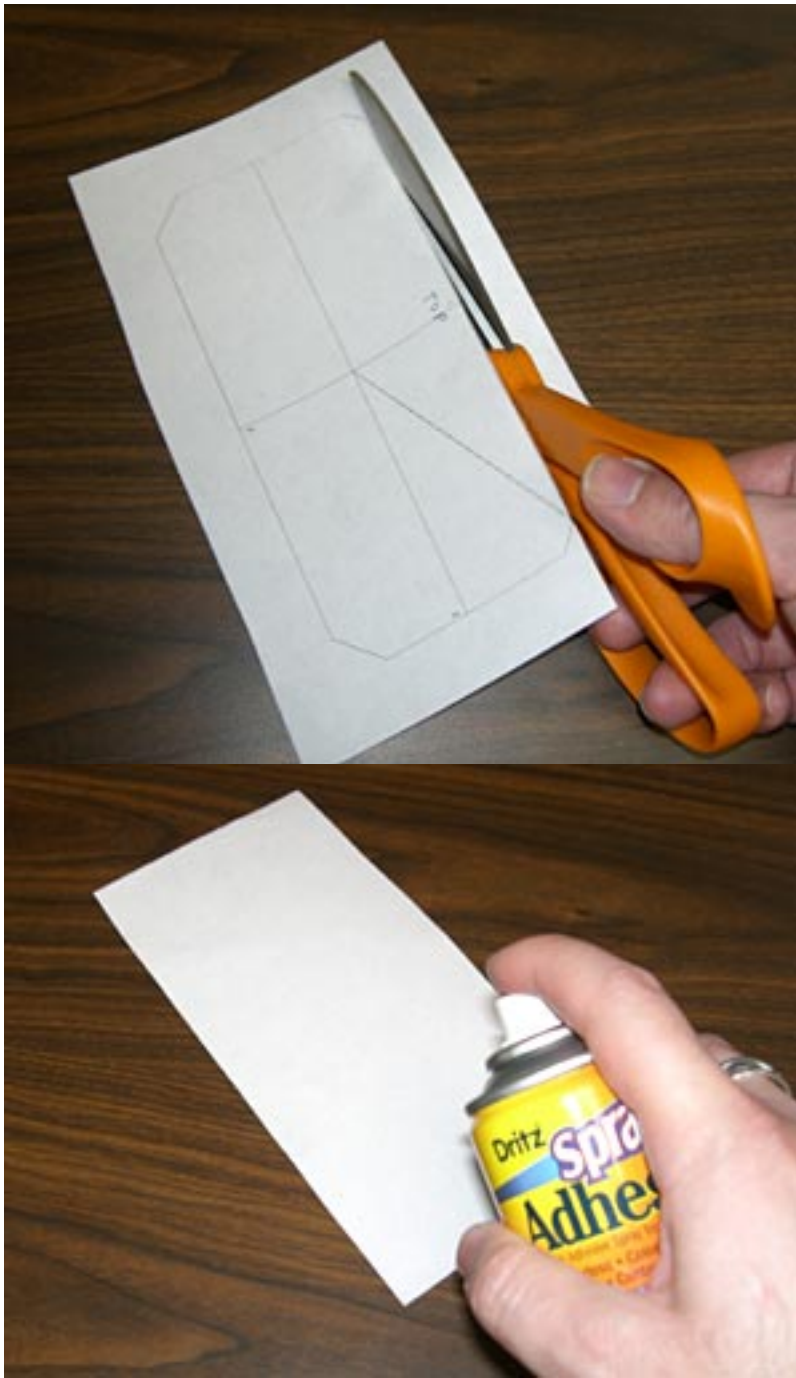
Spray the wrong side of the fabric with adhesive.



Place the batting on the fabric with the straight side that you cut in the middle, and smooth it over the fabric.



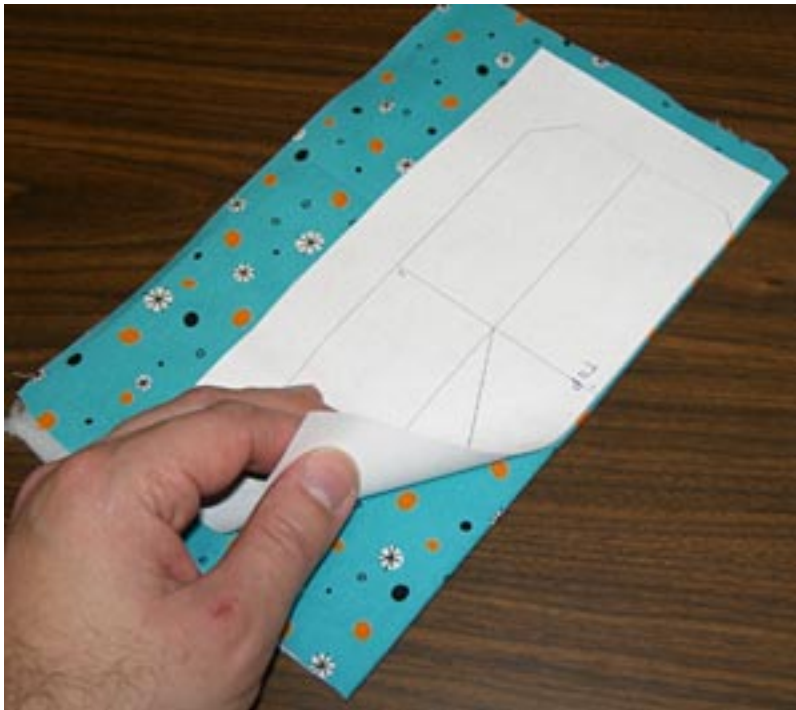
Fold the other side of the fabric over the batting, and smooth into place.



Cut the back piece dieline template along the top side (note: the top side has smaller corners).

Spray the wrong side of the template with adhesive.

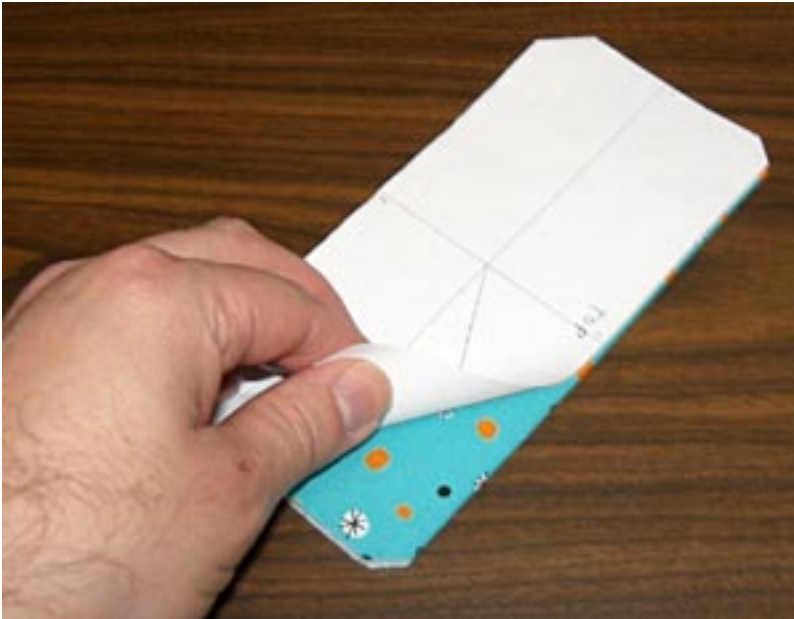




Place the cut edge of the template along the folded edge of the fabric and batting "taco."



Trim the shape around three sides -- but not the folded side.



Remove the paper template and set this back piece aside.



Now that the front and back pieces of the sunglasses case are assembled, it's time to embroider the "full" embroidery file.

Hoop a piece of tear-away stabilizer.



Wind a bobbin with thread that matches your outer fabric.



Begin embroidering the full design.

The first part of the design to sew (color change 1) is a dieline. This is a running stitch outline which marks placement for the front piece of the sunglasses case.

Spray a small amount of adhesive in the four corners of the inner side of the front piece.



Place the piece on the tear-away stabilizer, in the dieline.



The next part of the design to sew (color change two) is a tack-down stitch. This is a running stitch which holds the front piece to the stabilizer, as well as stitches the fabric and batting sandwich together.



The next part of the design to sew (color change 3) is the satin stitch border on the outer flap. For this step, too, match the bobbin thread to the needle thread.



After the outer flap satin stitch has sewn, you can return to regular bobbin thread.

The next steps (color changes 4, etc.) are the design components of the sunglasses case.



On the color change sheet you'll see a note that says "back piece dieline." Right after this step sews, switch back to the bobbin thread that matches the fabric color.

Give all four corners of one side of the back piece a quick shot of spray adhesive.



Place the back piece, folded side facing the flap, inside the dieline.

The next part of the design to sew is the "finishing seam" which attaches the back piece to the front piece.



Remove the stabilizer from the hoop, and gently tear the excess away.



Turn the case right side out.



Cut two 1/2" pieces of the hook and loop sides of the sticky-back Velcro.



Place the loop sides of the Velcro on the inside of the flap, about 1" from the outer edges.

Place a ruler along the side of the loop pieces and align the hook pieces on the outside of the back piece.

Before using, let sit about 24 hours to allow the adhesive to set.

[Click here for a printable version of these project instructions.](#)

You'll need to have Adobe Acrobat Reader installed on your computer. If you don't have it, you can download a free copy by clicking on the icon below.



[For instructions for making a coordinating coin purse, click here.](#)