

Turkey Trot Towel Topper (In-the-Hoop)



Create quirky and cute kitchen decor with an in-the-hoop turkey towel topper that is sure to elicit smiles! Follow these step-by-step instructions to make your own festive towel topper!

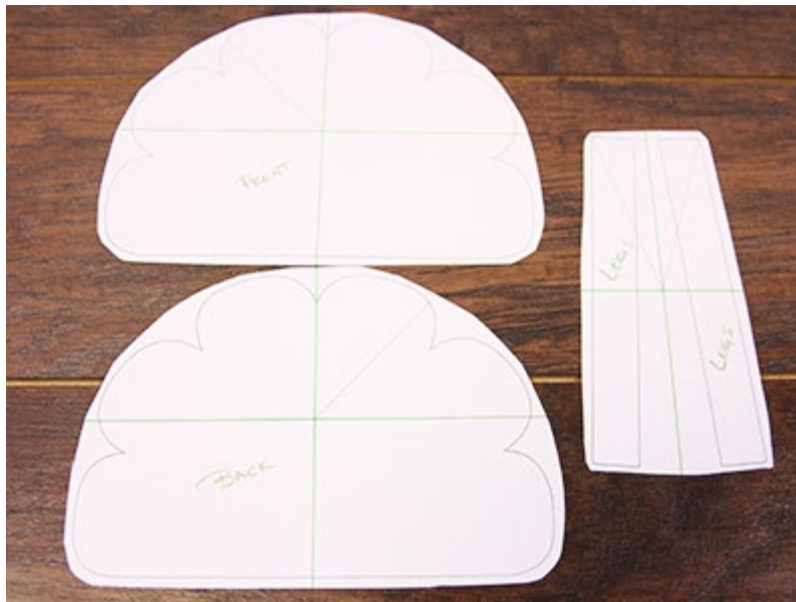
Project Needs & Notes:

- Hand towel
- Air-erase pen for marking
- Ruler
- 7" x 10" piece of tan linen
- 2 1/2" x 6" piece of orange quilter's cotton
- Printed templates for applique
- masking tape
- 3/4" wide knit elastic
- 1" wide strapping
- Strap snaps
- Hand sewing needle and thread
- Tear away stabilizer
- Temporary spray adhesive (such as Gunold KK100)

Design featured in this tutorial is:

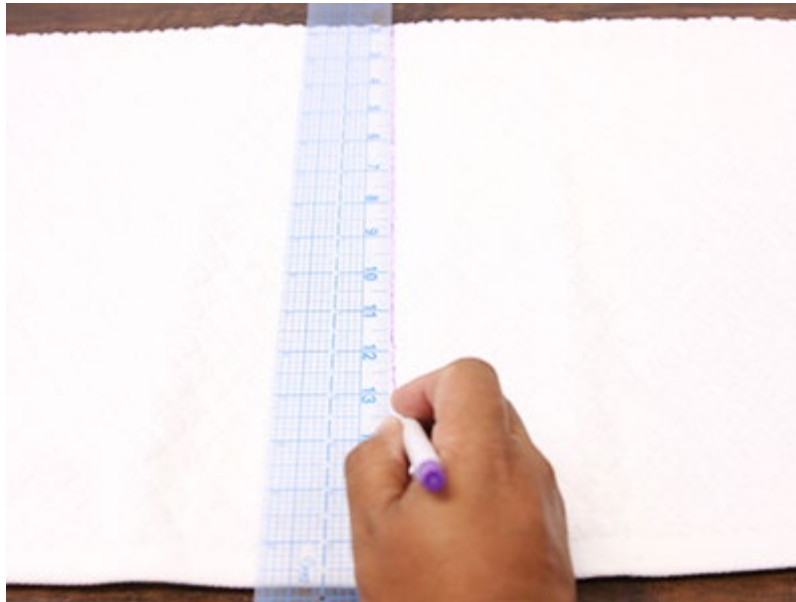
- [X14188, Turkey Trot Towel Topper \(In-the-Hoop\)](#)

When you download the Turkey Trot Towel Topper design, you'll find five files. One is an embroidery file, and the other four are dieline files, marked with the letters DL. Dielines are used to cut the fabric to the right shape and size.

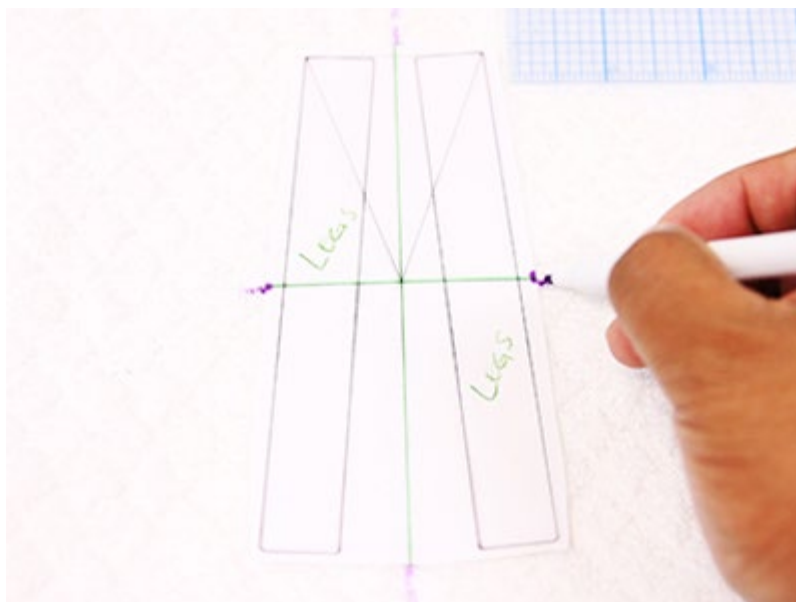


Open each dieline file with embroidery software and print it. If you do not have embroidery software, [Wilcom TrueSizer](#) is a free program to use.

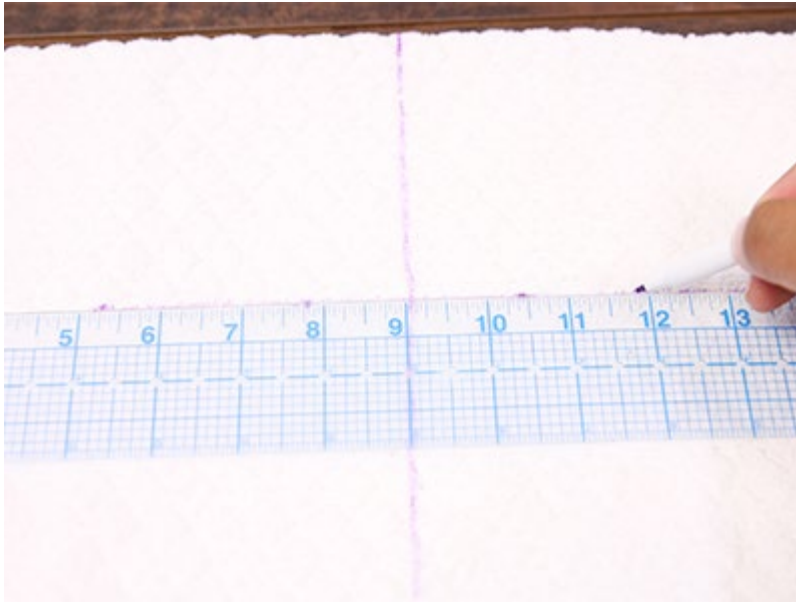
Print three copies of the front dieline file. This will allow you to have all the paper dielines separate from one another, and make them easy to use.



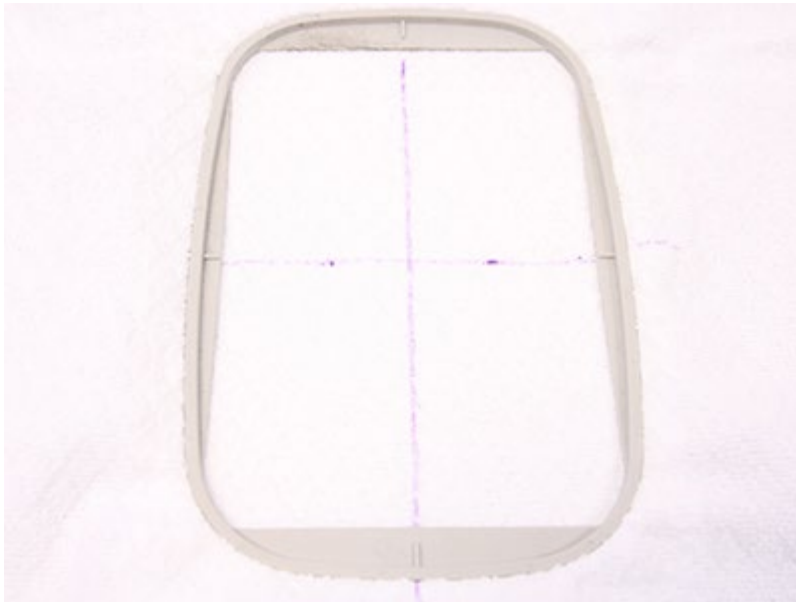
Lay the hand towel flat (folded in half, lengthwise). Use an air-erase pen to draw a line down the center of the towel.



Place the printed template of the legs on the towel 1 1/2" from the fold. Align the vertical cross bar on the template with the drawn line on the towel. Mark the horizontal cross bar of the design.



Remove the template and draw a line connecting the marks.



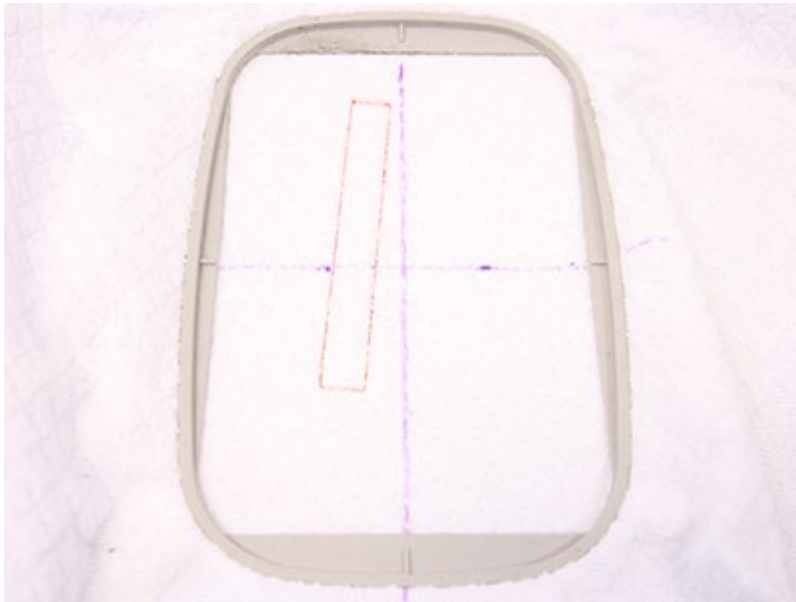
Cut a piece of cutaway stabilizer larger than the hoop and lightly spray the back side with temporary spray adhesive. Then, lay the hand towel on top. Hoop both layers together, aligning the cross bars with the axis points on the hoop.



Cut around the paper dielines, matching the dielines to the chosen fabrics. Spray the back side of the paper dielines with temporary adhesive and smooth them onto the correct fabrics. Add medium weight cutaway stabilizer to the back side of the towel topper fabric.



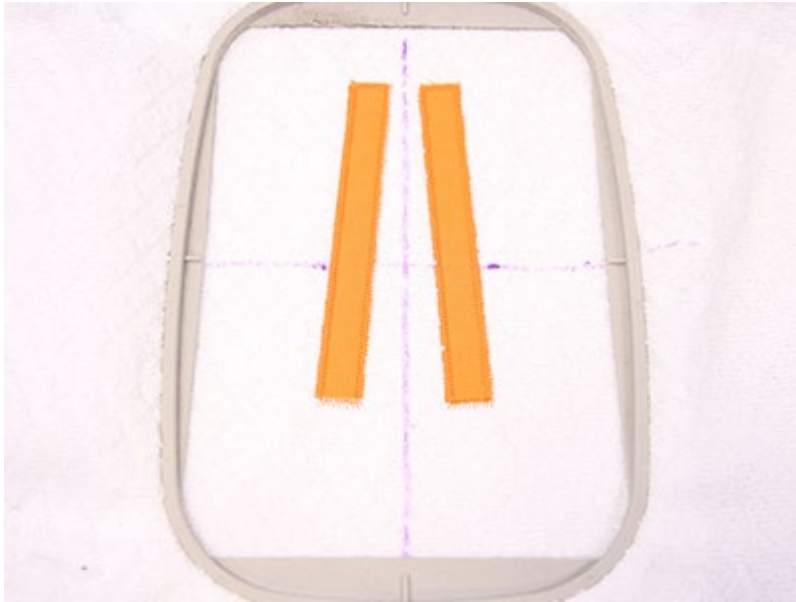
Cut out the shapes and remove the paper.



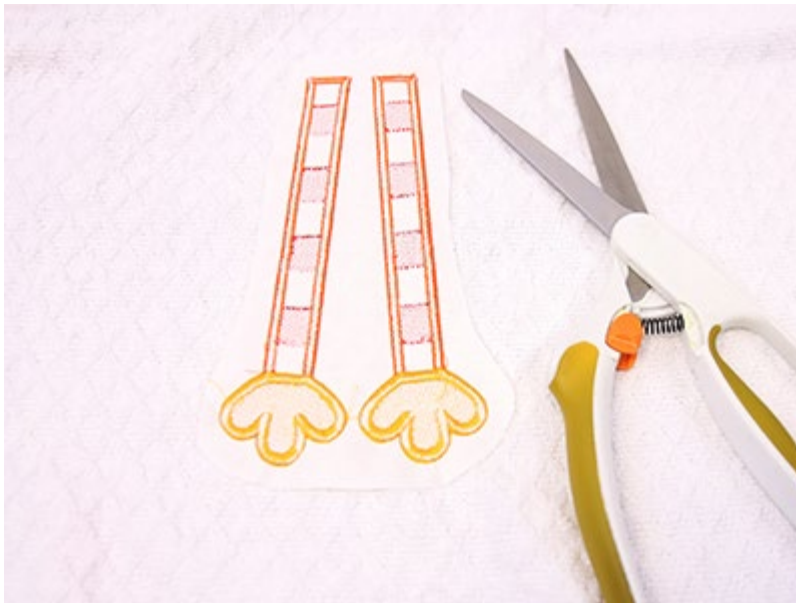
Attach the hoop to the machine and embroider the design. A size 11 or 75/11 embroidery needle is a fine choice when embroidering on towels. The first step to sew will be the left leg dieline. This marks the area for the applique fabric.



Lightly spray the backside of the fabric with temporary adhesive. Remove the hoop from the machine but do not unhoop the stabilizer. Place the fabric piece inside the sewn dieline.



Reattach the hoop to the machine and continue with the design. The next step will be the fabric tackdown, securing it in place. The dieline for the other leg will stitch out next. Repeat the previous step, then continue sewing the design.



After embroidering, trim the excess stabilizer away from the back. Once finished, set the towel aside and allow the air-erase marks to disappear.



To complete this design, hoop a piece of tear-away stabilizer and load the machine with design file "X14319b".



Attach the hoop to the machine and begin sewing the design. The first step to stitch will be the dieline for the fabric piece.



Spray the back side of the front fabric piece with temporary adhesive and place it within the stitched outline. A tackdown stitch will secure the fabric into place. The inside detail will begin stitching.



On the color change sheet, look for the note that says "back piece tackdown". When you get to this step, stop the machine, remove the hoop (do not remove the stabilizer from the hoop), and turn it over. Cut a piece of cotton or nylon strapping 8" long and tape one end to the back of the tear-away stabilizer.



Next, cut a piece of elastic that is as wide as the widest point of the fabric piece. Tape that to the front side of the fabric piece.



Spray the back of the fabric piece with temporary spray adhesive. Place the fabric piece within the dieline (over the strapping) on the back of the hooped stabilizer. Tape the loose strapping piece near the edge of the hoop; so it doesn't get caught while stitching the rest of the design.



The remaining steps to be embroidered ("tackdown" and finishing satin stitch border) will be seen from both sides. Wind a bobbin to match the top thread, before returning the hoop to the machine. The satin border is what attaches the elastic to the fabric.



After embroidering, gently tear the stabilizer away.



Add a snap to the strap placing the top snap 1/2" from the end of the strap. Place the "Bottom" snap 1/2" from the edge of the design.



Slip the towel through the elastic loop, so the turkey legs design hangs directly below the turkey towel topper. Snap this festive creation around a towel bar or oven door to display in your home!



This project is featured on the [Embroidery Library Pinterest page](#).

Pin it yourself using the "Pin It" button on this page.

Questions or comments? Let us know! Send an email to us; the address is stitch@emblibrary.com.