

3D Lace & Fabric Santa



Santa Claus is coming to town ... and to your home! Organza and quilters cotton combine beautifully with freestanding lace to make this magnificent Santa Claus, perfect for a Christmas tree topper or tabletop decoration. Follow these step-by-step instructions to stitch your own Santa!

Project Needs & Notes:

- 1/4 yard of red organza
- 1/4 yard of red quilters cotton
- 1/4 yard of white quilters cotton
- 1 white craft pom-pom (1/2")
- Medium-weight (2.5 ounce) cutaway stabilizer
- Water-soluble stabilizer (like Vilene or Sulky Ultra Solvy)
- Temporary spray adhesive (such as Gunold's KK100)
- Hand sewing needle or hot glue gun

Designs featured in this tutorial include:

- [X13756, Organza Santa in 3D \(Lace\)](#)

Finished Size:

5" wide (across cape corners) x 9" tall

Special Notes:

To make a completed lace and fabric Santa, you will need to sew a total of three outer cloak pieces (labeled with an "e"), and just one of each of the remaining pieces.

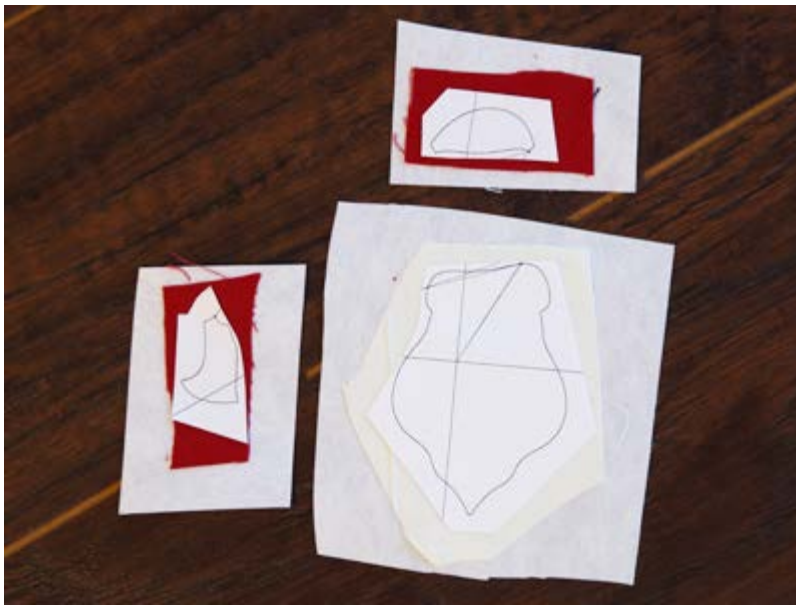
For a sturdier Santa, starch the lace organza pieces flat before assembling. After assembling the cone shaped body, you can also starch it in a cone shape to help the tree topper stand on its own.



When you download the lace and fabric Santa design, you will find a total of twenty files.

Eight of the files are embroidery files and, the other twelve are dieline files marked with the letters DL. Dielines are used to cut the fabric to the right shape and size.

Open each dieline file with an embroidery software, and print it. If you do not have embroidery software, [Wilcom's TrueSizer](#) is a free program to use.



For the cotton pieces (a, b, c, and d), cut the pieces out of the dieline printout, spray the backs with temporary adhesive, and smooth them on top of the red and/or white cotton fabric.

Then cut pieces of cutaway stabilizer that are slightly bigger than the fabric pieces.

Spray the stabilizer with temporary adhesive, and smooth it onto the backside of the fabric.



Cut out the shapes, and repeat for all fabric pieces, making sure to always add cutaway stabilizer to the back of the fabric.

If desired, the paper can be left on and labeled, so they don't get mixed up.



For the organza pieces there is always a front and a back dieline (pieces e, f, g, and h).



Cut out the shapes and repeat for all the front and back organza pieces.

For organza, it is good to leave the paper on until it's time to place the pieces in the hoop.

For easy removal later, fold back just one corner of the paper. It can also be helpful to label each piece.



This design has been specially digitized for water-soluble stabilizer.

After the stabilizer is removed, beautiful fabric-accented lace remains.



There are a couple of different kinds of water-soluble stabilizer. One is clear and plastic, and that brand is Sulky Ultra Solvy. The other is soft and fibrous, called Vilene. Both will work very well. Vilene is used in this demonstration.

Use a size 11 or 75/11 sharp sewing needle. A sharp sewing needle has a smaller, finer point than an embroidery needle. That means it will make smaller holes in the stabilizer.



Hoop the water-soluble stabilizer firmly. Make sure it is nice and tight with no wrinkles.



First, start by sewing the cotton files (a, b, c, and d). In this tutorial, we are stitching out file "c" first to show the multiple applique pieces.

Load the embroidery file labeled with an "c" onto the machine (not the dieline), and embroider the design.

The first thing to embroider will be a dieline, or outline stitch for the hat. This marks the area on the stabilizer where we'll place the first two fabric pieces.



Remove the hoop from the machine, but do not unhoop the stabilizer.

Spray the back of the two hat pieces with temporary adhesive. Place them right inside the sewn dielines (after removing the paper dieline).



Reattach the hoop to the machine and continue with the design.

A tack down will sew next. This binds the fabric pieces in place for the remainder of the design.

>



Watch the color change sheet, and stop the machine before sewing "head tack down".

Remove the hoop from the machine, but do not unhoop the stabilizer. Spray the backside of the head piece with temporary adhesive, and place it inside the sewn dieline.



Place the hoop back on the machine, and embroider the tack down.

Next, all of the inner elements will sew, followed by the satin edges and lace borders. Some of the embroidery files only have one fabric piece to place.

Follow the color change sheets carefully, and always place the fabric piece before sewing its tack down.

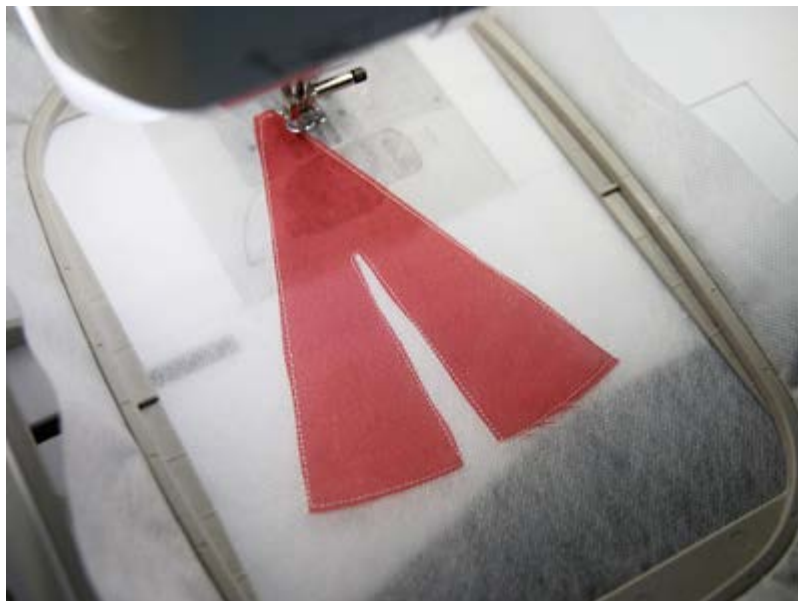


The lace organza files (e, f, g, and h) can be seen from both sides, so wind a bobbin with the same thread that you're using in the needle.



Hoop a piece of water-soluble stabilizer, and load embroidery file "e" onto the machine (not the dieline file).

Begin to embroider the design, and the dieline (or outline) of the fabric piece will embroider onto the stabilizer.



Once the dieline has sewn, remove the hoop from the machine.

Spray the backside of the front organza piece with temporary adhesive, and place it inside of the sewn dieline.

Then place the hoop back onto the machine, and embroidery the "front piece tack down."



Before sewing the "back piece tack down" step, stop the machine.

Remove the hoop, but do not unhoop the stabilizer. Lay the hoop and stabilizer on the table with the backside facing up.

Spray the backside of the back dieline with temporary adhesive, and place it on the back of the stabilizer and inside the sewn outline.



Place the hoop back on the machine, and embroider the rest of the design.

A tack down will sew first, followed by the inner details, finishing borders, and lace.



After the embroidery has finished, cut the excess stabilizer away for both the cotton and organza pieces.



The stabilizer's packaging should give instructions for removing the excess.

For Vilene, soak the organza and cotton pieces for a few moments.



Let the piece air dry, then press all pieces using a pressing cloth.



Repeat the previous steps to prepare and embroider the lace cotton and organza pieces.

Make sure to sew file "c" out a total of three times, so there are three identical pieces to make the outer cloak.



Once all the pieces are embroidered, it is time to assemble the Santa.

First, take the two body pieces (a and b), and line up the straight edges with the wrong sides of the pieces together.

Hand sew the two pieces together along one side from the top corners to the bottom fabric corners.



Then repeat and sew the opposite sides together, creating the base cone.



Next take one of the outer cloak pieces (piece "e"), and fold it in half along the center dart.

Make sure it is folded so that the wrong sides of the lace are together.

Hand stitch the dart closed from the point to the bottom corner of the lace border.



Repeat the previous step to sew the dart on all three outer cloak pieces.

Then lay them side by side, and match up the straight edges. Make sure the right sides are all facing up, and sew them together.

This step can be either sewn by hand or on a machine using a zigzag stitch.



Next take the back shoulder piece (piece "h"), and fold it in half with the wrong sides touching.

Hand sew the dart closed from the point to the bottom corner of the fabric piece.



Then take the front shoulder pieces (f and g), and match the curved edges with the back shoulder piece ("h").

Make sure the wrong sides of the pieces are together. Hand stitch starting at the bottom corner, sewing up and around the curve until you get to where the front shoulder pieces end.



Now take the outer cloak pieces (the three "e" pieces), and place them inside of the shoulder pieces (f, g, and h).

Make sure the right side of the outer cloak is against the wrong side of the shoulder pieces (so they both face out).

Match up the top corner of one side of the outer cloak to the top corner of the front shoulder piece.

Sew them together along the straight edge until you get to the bottom corner of the lace border. Repeat for the opposite side.



Find the center back of the outer cloak piece along the top edge. Match that spot up with the point of the dart on the shoulders.

Hand tack them together with a needle and thread or some glue. This will keep the two sections securely together and help them keep their shape.



Next, place the body cone onto a bottle of glue or soda, and drape the outer cloak around the cone.

Line the two pieces up until the cloak is resting right on the top of the cone.

Then, close the cloak around the cone until the top edges of the shoulders meet the sides of the white stripe. Hand tack them together on both sides at the top of the cone.



Take the two head pieces (c and d), and match them up back to back with the wrong sides of the pieces together. Locate the widest point on the beard.

Start on one side and sew the pieces together from the widest point up over the top of the hat, and then sew down until you get to the widest point of the beard on the opposite side. Leave the bottom edges open.



Then open up the bottom of the head pieces, and place them over the shoulders.

Make sure the shoulders are up between the two head pieces.

Use a hand sewing needle and thread or glue to tack the beard to the shoulder on both sides.



Line up the center back of the body cone and the center back of the outer cloak, and hand tack them together at the very bottom of the lace pieces. This will keep Santa standing up tall.



Finally, glue a tiny craft pom-pom to the tip of Santa's hat to finish off this jolly holiday decoration.

This project is featured on the Embroidery Library Pinterest page.

Pin it yourself using the "Pin It" button on this page.



Questions or comments? Let us know! Send an email to us; the address is stitch@emblibrary.com.