

Merry Canine Christmas Stocking



Furry, four-legged friends need Christmas stockings too! Learn how to make a bone-shaped stocking for your favorite pooch with this free tutorial. Your furbabies will love sniffing out their gifts on Christmas morning.

Project Needs & Notes

- 1/4 yard lightweight canvas for front
- 12" x 20" piece of quilted cotton fabric for back
- 1/2 yard print cotton fabric for inner lining
- Medium-weight (2.5 ounce) cutaway stabilizer
- Temporary spray adhesive (Like Gunold KK100)
- 10" length of 1/4" wide ribbon for hanger
- Air-erase pen for marking
- Fabric glue
- Scotch tape

For this tutorial, I used the large size of the [Christmas Surprise Puppy](#) design. Browse through the [Christmas category](#) to find something that matches your preference and decor. Designs that are 5" x 9" or smaller fit comfortably on this stocking.

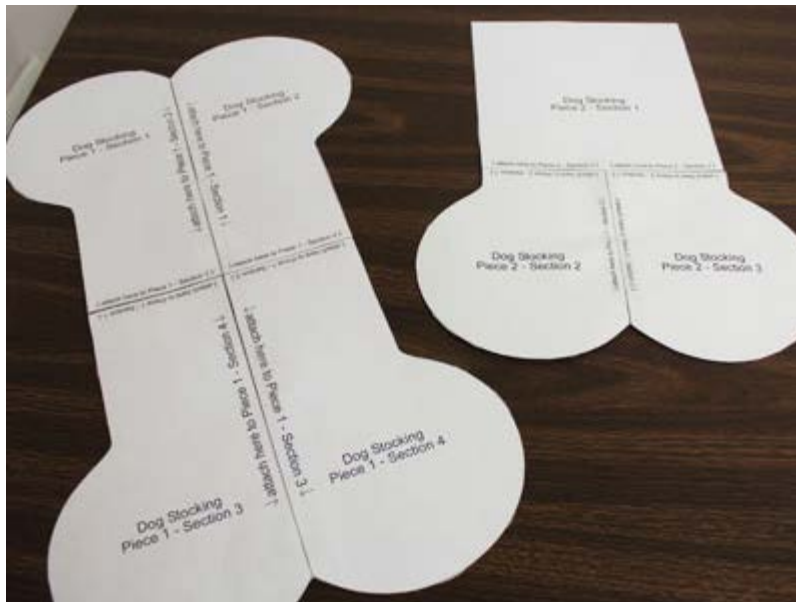
Finished size:

16" from bone indent top to bone indent bottom
6" opening and width

This project was featured in the following:

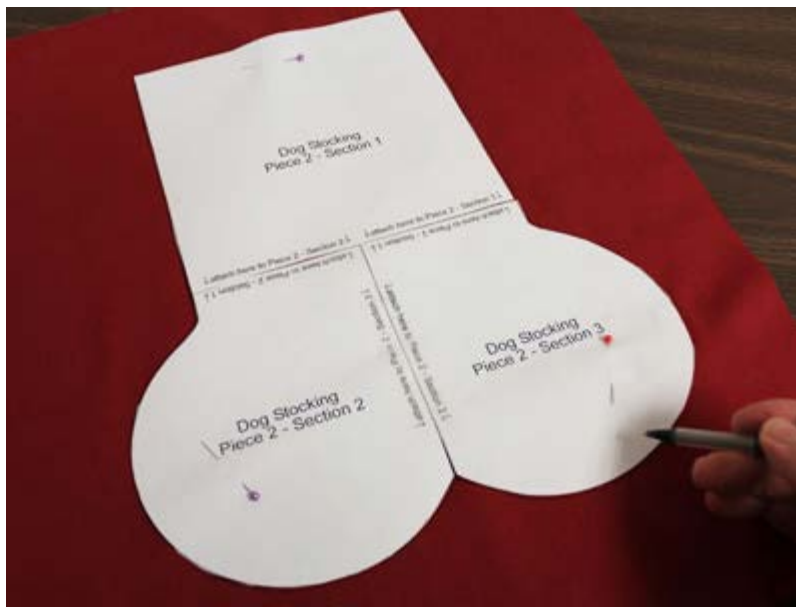
[Dreaming of Christmas Lookbook](#)
[12 Days of Christmas Stockings Lookbook](#)

To get started, print the PDF of the pattern pieces: [pattern piece 1](#) and [pattern piece 2](#). The patterns consist of 7 pages.



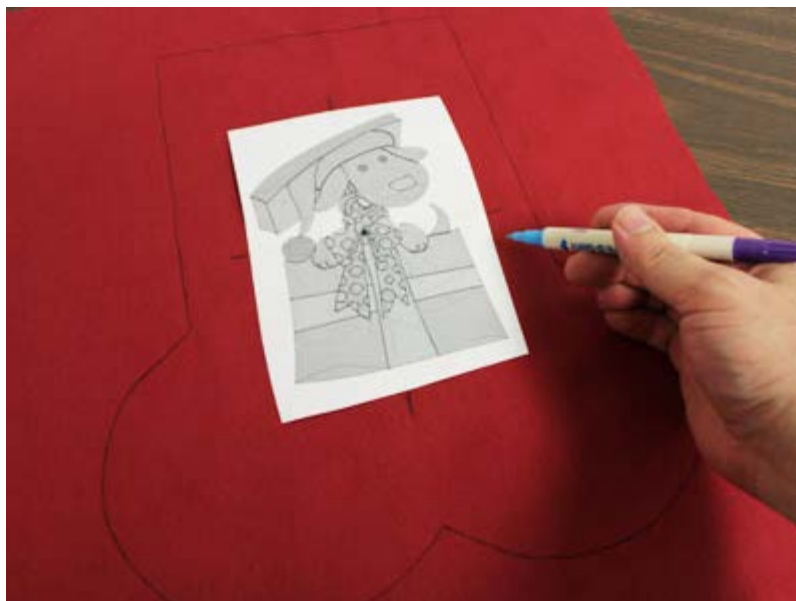
Cut out the pattern pieces and tape them together.

The piece shown on the left is the back of the stocking, and the piece on the right is the front.



Begin by preparing the front of the stocking. Lay pattern piece 2 on top of the lightweight canvas.

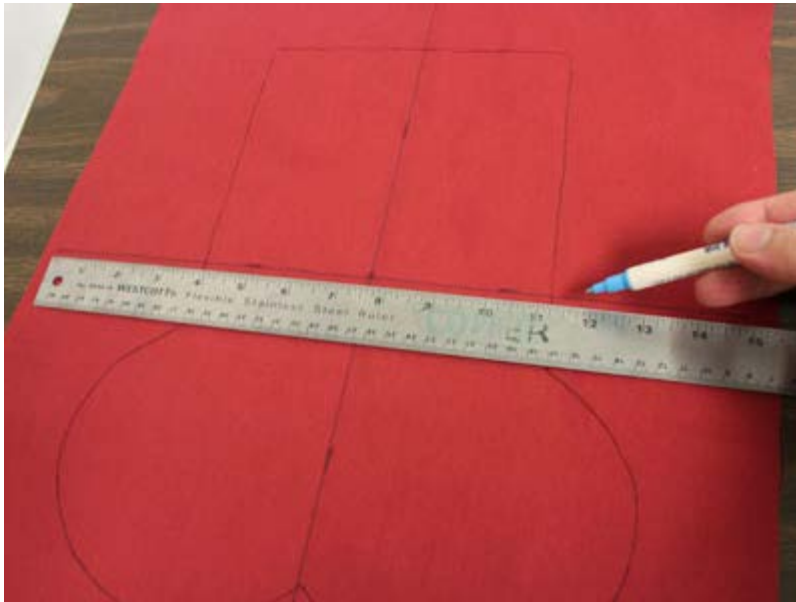
Pin the pattern in place, and trace the shape.



Print a template from embroidery software. If you do not have software to make templates, try [Wilcom's TrueSizer](#), a free program.

Arrange the template of the design on the fabric. Leave at least 1" of space between the outer edges of the design and the outer edges of the fabric.

Mark the center point of the design, as well as the horizontal and vertical axis lines.



Remove the template and draw lines connecting the marks.



Spray the cutaway stabilizer with temporary adhesive. Smooth the fabric on top.

Hoop the fabric, aligning the marks on the fabric with the marks on the hoop.

Attach the hoop to the machine and load the design. Move the hoop so that the needle is right over the center point.

Embroider the design.



When the design has finished, trim the excess stabilizer away from the back.



Cut out the front stocking shape.



To prepare the fabric for the front inner lining, use pattern piece 2 to cut a piece of the print cotton fabric.

Align the front inner lining and front embroidered piece together, right sides together. Pin in place and sew a seam along the top edge only.



Turn the pieces right side out, and fold at the seam. The wrong sides will be together.

Press the seam with an iron and top stitch a 1/4" seam along the top edge only.

Tack the pieces together along the side and bottom edges with a 1/8" seam.



Using pattern piece 1, cut one piece of the print cotton fabric for the back inner lining.

Also, cut one piece of the quilted cotton for the back.

Lay the back print cotton piece flat with the right side facing up.

Align the assembled front piece on top of the back print cotton piece. The right sides should both face up, and the bottom of the top piece should be aligned with the bottom of the back piece.



To make the ribbon hanger, cut a piece of 1/2" wide ribbon to 10" long. Bring the ends together to form a loop and glue in place with fabric glue. Place the loop along the top right or left side of the back inner lining fabric with about 1/4" of the loop extending out past the edge of the fabric and pin in place.

Align the back quilted cotton piece on top, wrong side facing up.

Pin in place and sew a 1/2" seam along the outer edges leaving a 3" to 4" opening along one of the straight edges for turning.



Clip the seam allowance along the curved edges about every 1/2".



Turn the stocking right side out.

Fold the fabric of the opening in 1/2", press, and pin in place.

Press the seams. Top stitch a 1/4" seam along the entire outer edge of the shape.

The classic bone shape is the perfect fit for this dog stocking.

Find matching fabric and a puppy embroidery design to complete the look!



Questions or comments? Let us know! Send an email to us; the address is stitch@emlibrary.com.