

# Magnets, In-the-Hoop



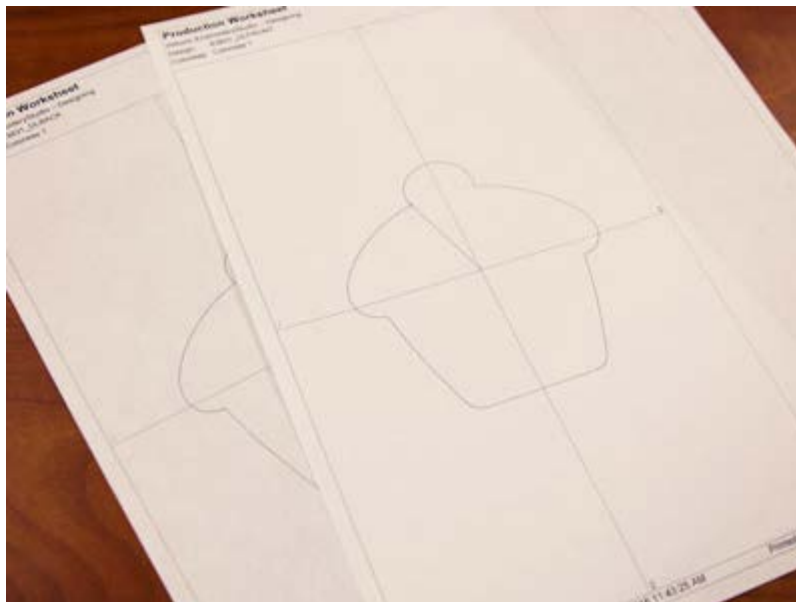
Give your refrigerator an embroidered update with in-the-hoop magnet designs. They're also perfect for filing cabinets, memory boards, and more!

---

## Project Needs & Notes:

- Cotton fabric (lightweight canvas, denim, twill, etc.)
- Medium-weight (2.5 ounce) cutaway stabilizer
- Temporary spray adhesive (Gunold's KK100)
- Self-adhesive magnet strips or button magnets with hot glue and gun

The design used in this demonstration is [X3831, Cherry On Top Magnet](#).



In-the-hoop magnet designs have one full embroidery file and two dielines.

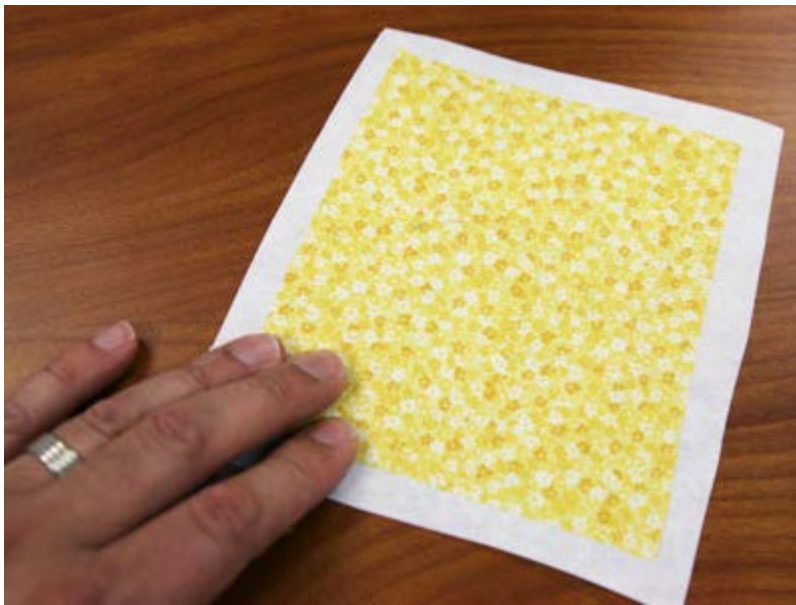
Dieline files are marked with the letters DL. They're used to cut the fabric to the proper shape and size.

Open the dieline files with embroidery software and print them.

If you do not have embroidery software, [Wilcom's TrueSizer](#) is a free program to use.



Spray a piece of cutaway stabilizer with temporary adhesive.



Smooth the fabric for the magnet on top.



Place the printed dieline for the front of the magnet on top, and cut out the shape.

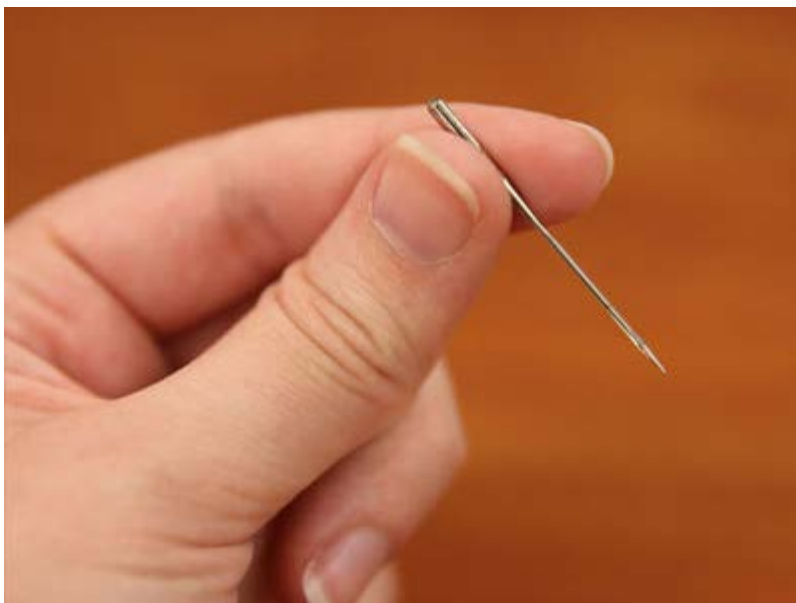


Repeat this for the back printed dieline, too.



Now that the fabric pieces are cut to the proper shape and size, it's time to embroider the design.

Hoop a piece of tear-away stabilizer.



Use a size 11 sharp sewing needle in the machine rather than an embroidery needle.

A sharp sewing needle is the best choice when embroidering in-the-hoop designs.



Load the full embroidery file (not a dieline file) to your embroidery machine.

Attach the hoop, and begin embroidering the design.



Reference the color change sheet for the design as you stitch. That sheet tells you what is stitched in each step.

CC1 is a dieline, or outline stitch, that traces the shape for the front fabric pieces.



After CC1 has sewn, spray the back side of the front fabric and stabilizer piece with temporary adhesive.



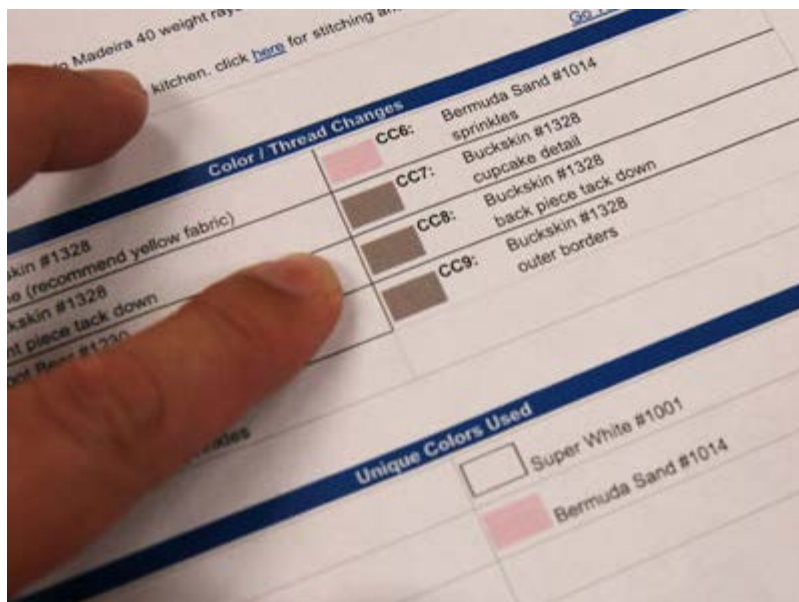
Place that right inside the stitched dieline.



Continue embroidering the design. The next thing to stitch is a tack down or zigzag stitch which binds that fabric to the stabilizer.



Other elements of the design will embroider. Keep referencing the color change sheet as you stitch.



When you get to the note on the color change sheet that says "back piece tack down," stop the machine before stitching this step.



Remove the hoop from the machine, but do not unhoop the stabilizer.

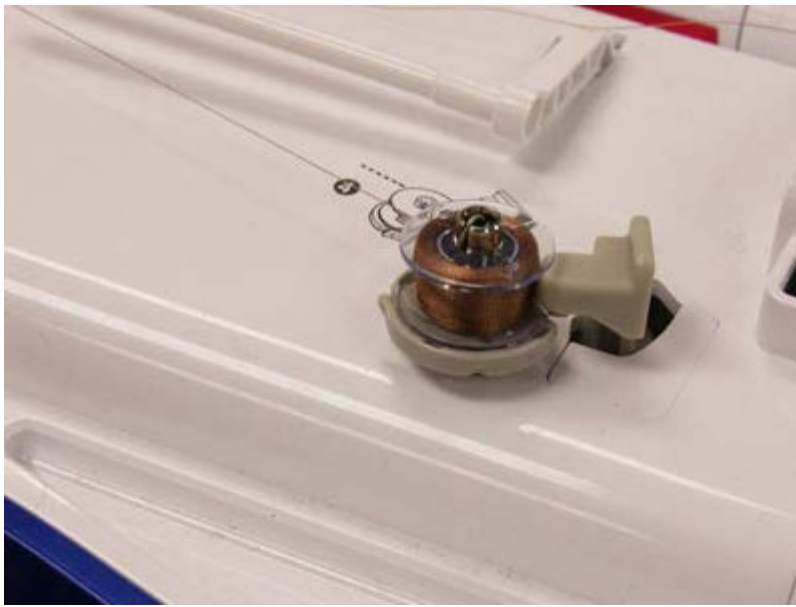
Turn the hoop over.



Spray the backside of the back fabric and stabilizer piece with temporary adhesive.



Place that on the back of the stabilizer, right inside the shape.

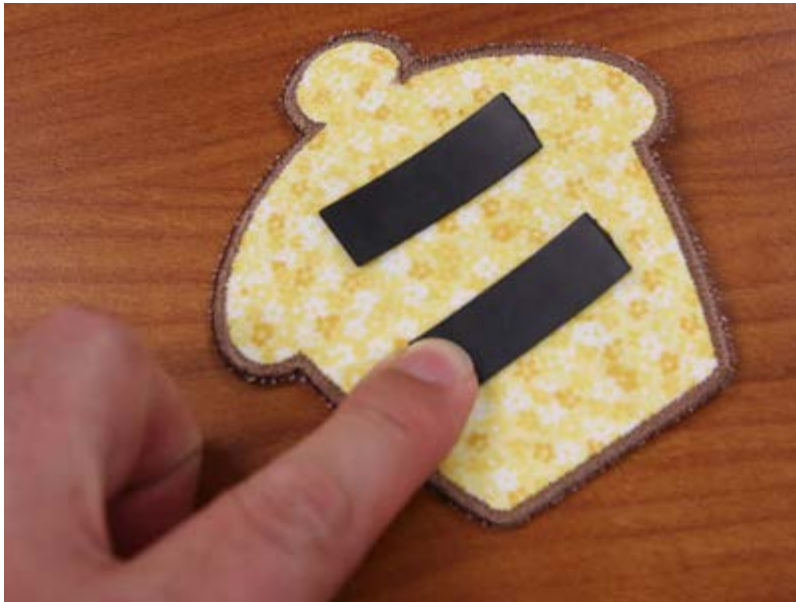


The next steps will be seen from both sides, so wind a bobbin with the same thread you're using in the top.

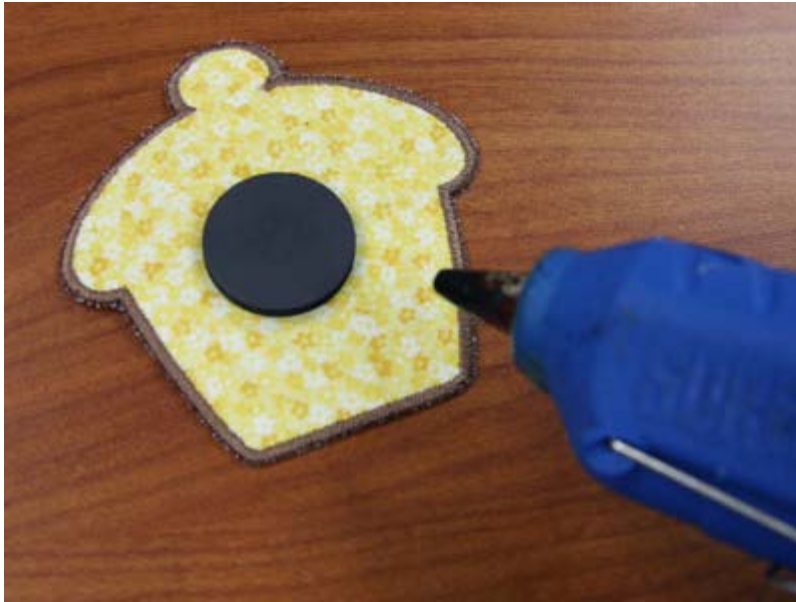


Attach the hoop to the machine and continue embroidering the design. The next step is a tack down or zigzag stitch that binds the layers together, and finally, a satin stitch border.

After the design has finished, unhoop the stabilizer and carefully tear it away from the design.



Apply self-adhesive magnet strips to the back.

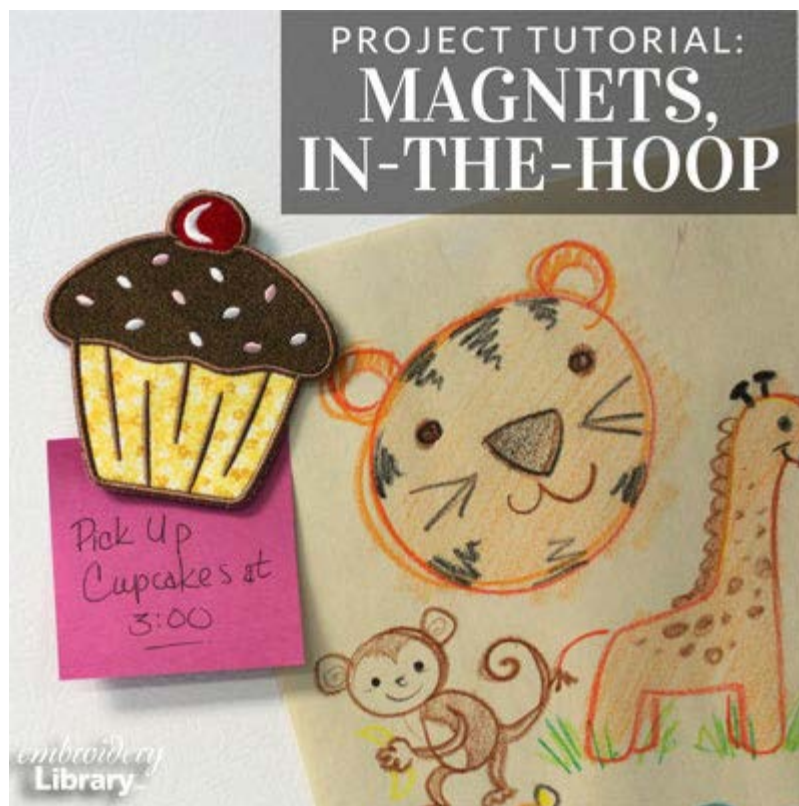


Or, apply button magnets with drops of hot glue.



Give your fridge a bright and colorful look with charming in-the-hoop magnets. With themes including sweet treats, tropical getaways, back to school, and more, there's a perfect option for everyone!





This project is featured on the [Embroidery Library Pinterest page](#).

Pin it yourself using the "Pin It" button on this page.

Questions or comments? Let us know! Send an email to us; the address is [stitch@emblibrary.com](mailto:stitch@emblibrary.com).