

Embroidered Fleece Hat



Warm up with a cozy embroidered fleece hat! Colorful embroidery adds a unique style -- make one for yourself, your favorite little one, or a friend, too.

Project Needs & Notes:

- 1/2 yard fleece
- Air-erase pen
- Medium-weight cutaway stabilizer
- Lightweight water-soluble stabilizer for topping
- Scotch tape

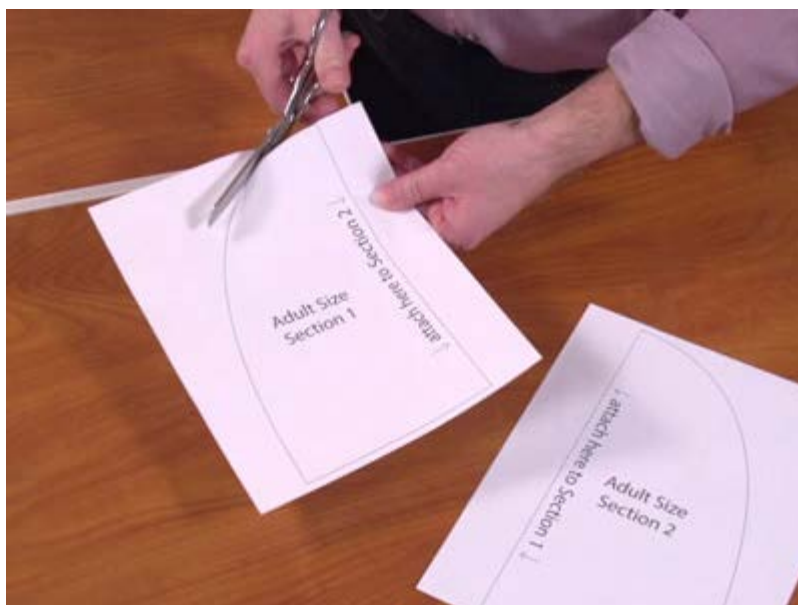
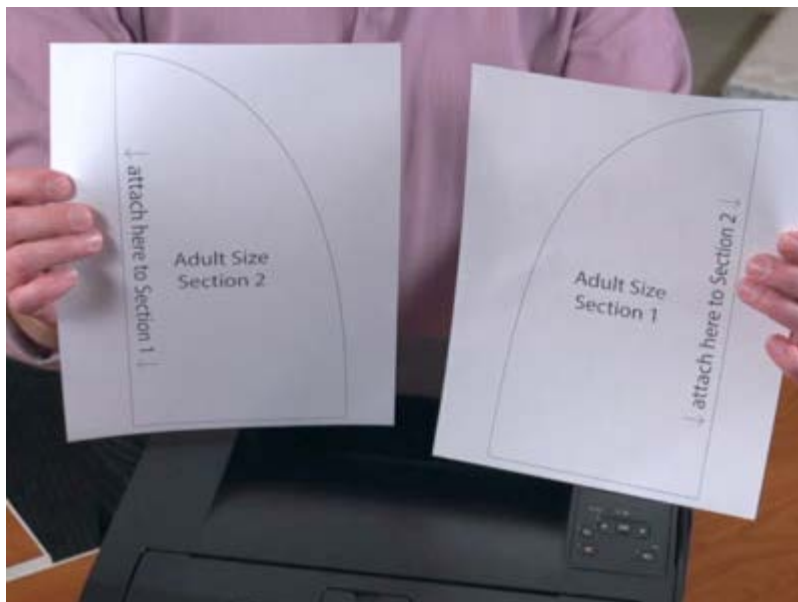
The designs featured in this tutorial include:
- [M11757, Shabby Chic Butterfly \(Whitework\)](#)
- [M2799, Doodle Sleepy Owl 1](#)



To get started, choose if you'd like to make the adult or child sized hat and print the PDF of the pattern pieces:

- [Adult size pattern](#)
- [Child size pattern](#)
- [Infant size pattern](#)

The adult size and the child size will print on two pieces of paper. The infant size will print on one piece.



Cut out the pattern shapes.



Tape the pattern pieces together (for the adult and child sizes).



Next, lay the pattern piece on top of the fleece and pin it in place.

Leave a couple of inches of excess around the pattern shape.

Trace the shape and remove the pattern.



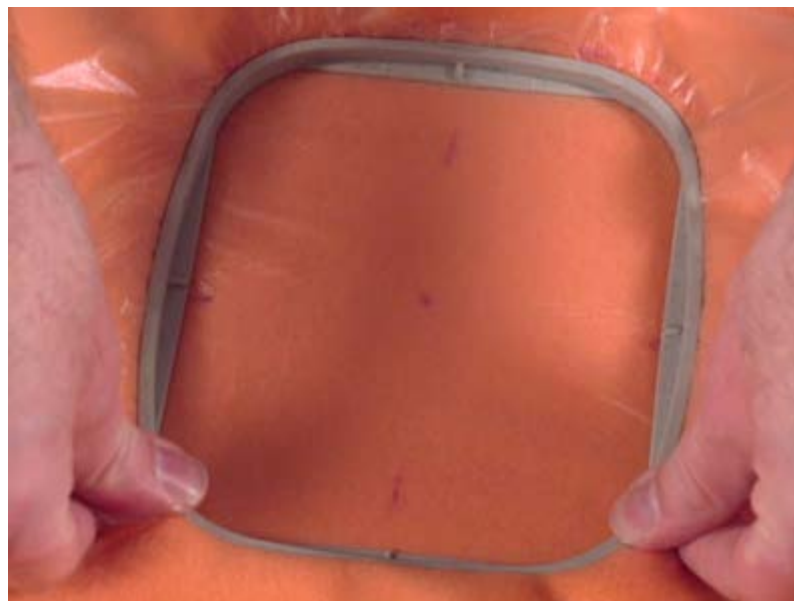
A template, or printout of a design, is an excellent tool to help with placement.

Print a template of the design from your embroidery software.

If you do not have embroidery software, [Wilcom's TrueSizer](#) is a free program to use.

Position the design about 2" from the top of the shape.

Mark the center point and the horizontal and vertical axis lines.



Hoop the fabric with one piece of cutaway stabilizer. Add one piece of lightweight water soluble stabilizer on top. This topping helps to prevent the stitches from sinking into the fabric.

Hoop all three layers together. Align the marks on the hoop with the marks on the fabric.



Attach the hoop to the machine and load the design.

Move the hoop so the needle is right over the center point.

Embroider the design.



After the design has finished, trim away the excess stabilizer on the backside of the embroidery.



Then, cut out the shape.



Lay the embroidered piece on top of the fabric, right sides together.

Pin in place, and cut around the shape of the embroidered piece.



Sew a 1/2" seam along the side and top edges starting and stopping 2" from the bottom edge.



Turn the hat right side out.



Align the open side edges together, and pin.



Sew a 1/2" seam along the side edges.



Then, fold the bottom edge up about 2".



These hats are a fun and fast way to add embroidery to your winter wardrobe. Great for the kids, too!



This project is featured on the [Embroidery Library Pinterest page](#).

Pin it yourself using the "Pin It" button on this page.

Questions or comments? Let us know! Send an email to us; the address is stitch@emblibrary.com.