

Stained Glass Nativity Wall Hanging



Share the spirit of Christmas with a beautifully embroidered stained glass Nativity wall hanging.

This project contains nine striking stained glass embroidery designs that are designed to fit together to create a gorgeous cathedral-style stained glass window scene.

Stitch this glorious stained glass Nativity centerpiece to enrich many Christmas seasons to come!

Read below for these free project instructions!

Supplies Needed:

****3/4 yard solid-colored denim or twill (for stained glass panels)**

****1 yard print canvas (for front and back)**

****Medium-weight cutaway stabilizer**

****Temporary spray adhesive**

****Air-erase pen (or other marking tool)**



**Extra wide double fold bias tape

**Fabric glue

**1 1/2 yards - 3/8 inch wide decorative trim (optional)

**Nylon monofilament thread

**28 inch (expandable to 48 inch) curtain rod

Designs used:

[Stained Glass Nativity Scene Design Pack \(small\)](#)

This design pack is also available in other sizes:

A Stained Glass Nativity Scene Design Pack - [Large](#), [Medium](#)

Finished Sizes:

We used the [small](#) sized Stained Glass Nativity designs for this project. The finished size of the wall hanging is 20 1/2 inches wide by 22 1/2 inches tall. If you choose to use larger designs, below are the approximate finished sizes you will have for your wall hanging:

Large = 27 3/4 inches wide by 30 inches high

Medium = 23 inches wide by 25 inches high

Small = 20 1/2 inches wide by 22 1/2 inches high

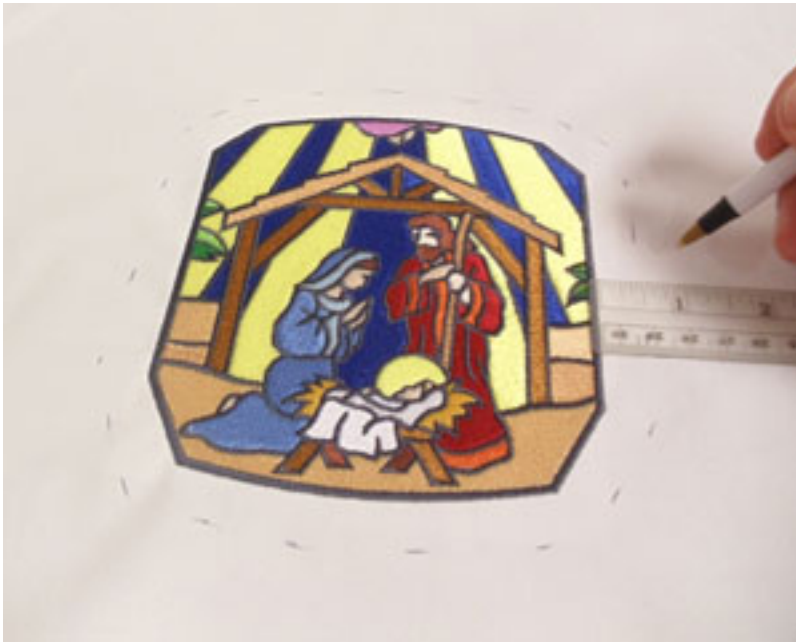


To begin, we will prepare the embroidered panels. Cut a piece of denim or twill fabric a bit larger than your hoop. Spray a piece of medium-weight cutaway stabilizer with temporary adhesive and smooth the fabric on top. Hoop the fabric and stabilizer together.



Attach the hoop to the machine, load the first design and begin embroidering the design (be sure to follow the [color change sheets](#) for these designs, or choose coordinating colors, as elements of the designs continue from one panel to the next). When the design has finished, trim away the excess stabilizer on the back of the embroidery.

Repeat the hooping and embroidering process for the remaining eight designs. Then, trim away the excess stabilizer on the back of each panel.



For each of the panels, measure and mark out 1/2 inch around the outer edges of the designs and draw lines to connect the marks.



Cut out the shapes.



Arrange the panels to match the picture on the left. You can also view a large image of the scene by [clicking here](#).



Align the bottom edge of the top middle panel, with the top edge of the center panel, with right sides facing.



Align the satin stitch borders of the designs (so there will be no gaps between the panels), at the center top and pin in place. Sew a seam along the outer edge of the satin stitch border along the pinned edge only -- start in the center and sew to the outer edges keeping the satin stitch borders aligned as you sew. Press the back seams open with an iron.



Align the top edge of the bottom middle panel, with the bottom edge of the center panel, with right sides facing. Align the satin borders together, pin in place, and sew just as you did earlier.



Align the inner angled edge of the upper right corner panel, with the angled upper right corner of the center panel. Align the satin borders, pin, and sew in place.



Align the inner angled edges of each of the remaining corner panels, with the angled corners of the center panel. Align the satin borders, pin, and sew in place.



Align the inner edges of the center side panels, with the side edges of the center panel. Align the satin borders, pin, and sew in place.



Align all of the remaining edges together, one at a time. Align the satin borders, pin, and sew in place.



Next, we added trim in between each of the panels. To do this, cut a piece of trim long enough to cover each inner horizontal border. Add a drop of fabric glue to the ends of each piece to prevent them from fraying. Spray the back of each piece with temporary adhesive and press them in place. Sew the trim in place by sewing a seam in the center using nylon monofilament thread.



Add trim along the vertical borders just as you did with the horizontal borders.

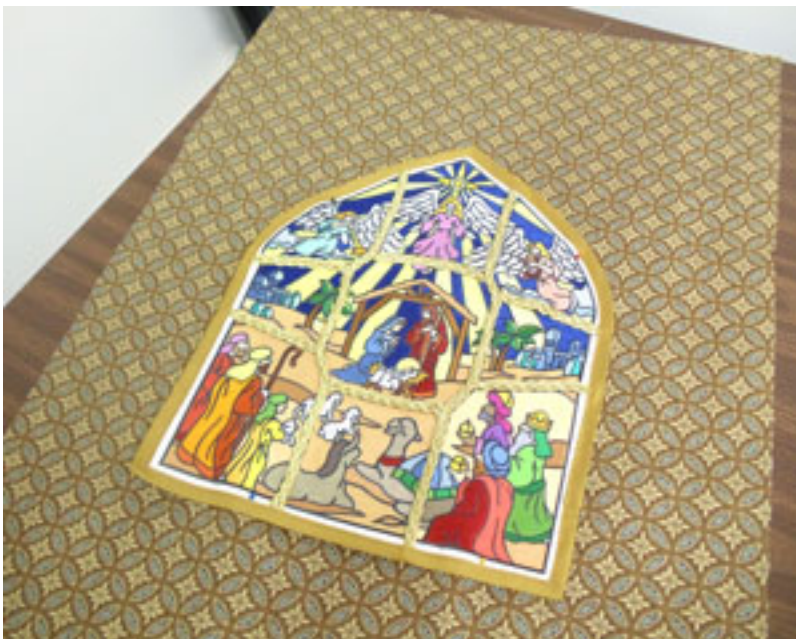


Wrap the outer edges of the assembled panels with bias tape and pin in place.



Sew a seam along the inner edge of the tape -- fold the end of the tape over 1/4 inch before sewing it in place.

To prepare the fabric for the front of the wall hanging, lay the embroidered panels on top of the canvas fabric and pin in place. Measure and mark out 4 3/4 inches from the outer edges of the panels (along the bottom, sides, and from the two vertical lines on the top center of the embroidered panels). Draw lines to connect the marks.



Measure and mark up an additional 2 1/2 inches at each top corner to create a pocket for the curtain rod. The total dimensions of our front fabric are 21 1/2 inches wide by 26 inches high. Draw a line to connect the marks. Then, cut out the shape.

Sew a seam along the outer edge of the bias tape to tack the panels to the front fabric.



To prepare the fabric for the back of the wall hanging, cut another piece of fabric to the same dimensions you used to cut the front piece. Align the back fabric on top of the front fabric, with right sides facing, and pin in place. Sew a 1/2 inch seam along the side and top edges only -- leave the bottom edge open for turning.



Turn the fabric right side out and press the seams. Also, turn the fabric of the opening in 1/2 inch and press. Pin the bottom edge and sew a 1/4 inch seam along the side and bottom edges only.



To create the curtain rod pocket at the top, fold the top edge over 2 1/2 inches to the back. Pin in place and sew a 1/4 inch seam along the bottom edge of the fold. Insert the curtain rod through the pocket, and your wall hanging is complete!

And you don't have to stop there -- add embroidered hymns, or embellish with crystals, tassels, or trim to make your wall hanging even more festive!



Hang this classic Nativity scene in your home or at church to complete your Christmas decor this holiday season.

[Click here for a printable version of these project instructions.](#)



You'll need to have Adobe Acrobat Reader installed on your computer. If you don't have it, you can download a free copy by clicking on the icon above.