

# Christmas Story Stocking



Christmas stockings are long, and the space is a wonderful opportunity to stitch several designs to tell a story. Here, a trio of designs tell the story of the Holy Night. Choose two, three, or four designs to stitch a Christmas tableau or wintry scene on your stocking.

---

## Project Needs & Notes

- 1/2 yard faux suede for the front and back of stocking
- 1/2 yard print quilter's cotton for lining
- Medium-weight (2.5 ounce) cutaway stabilizer
- Temporary spray adhesive (like Gunold KK100)
- Air-erase pen for marking
- 1 1/2" wide ribbon for top trim
- 1/2" wide ribbon for hanger
- Heat-set crystals and tool (optional)
- Scotch Tape

For this tutorial, I used the large size of the [Nativity Stocking designs](#) -- the [Unto Us a Child is Born design](#), the [Angel design](#), and the [Manger Scene design](#). Browse through the [Christmas category](#) to find designs to tell a story on your stocking.

## Finished Size:

- 14" cuff to heel
- 11" heel to toe
- 7" opening

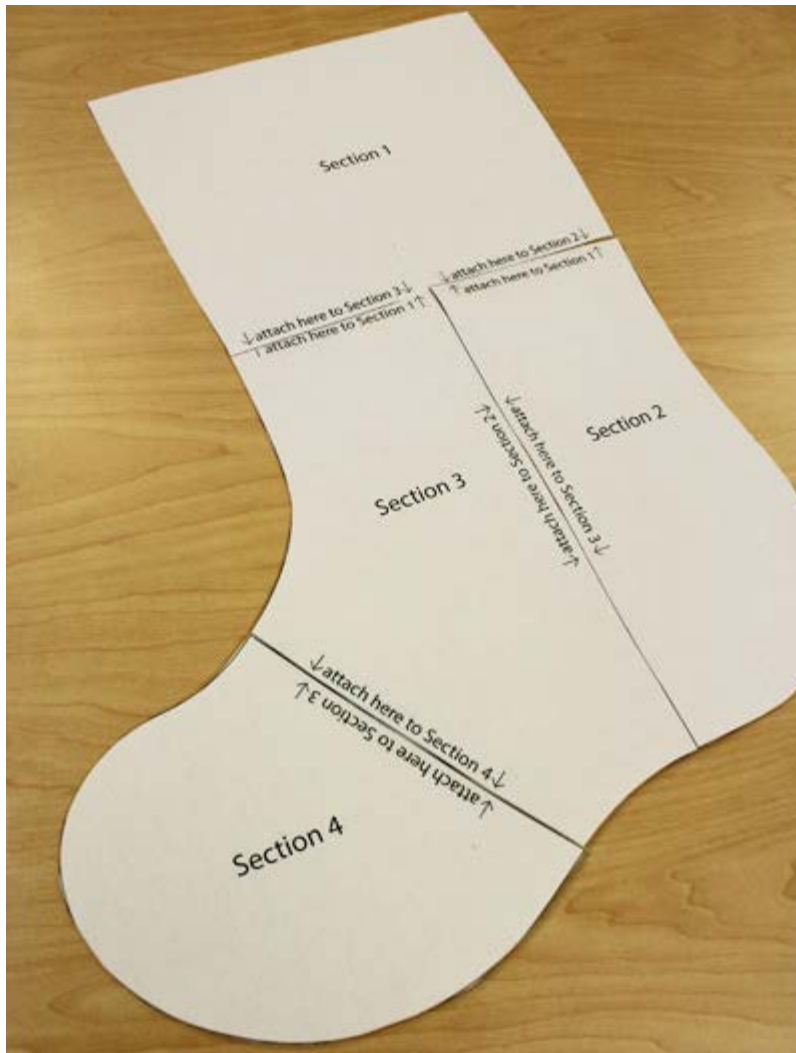
## This project was featured in the following:

[12 Days of Christmas Stockings Lookbook](#)

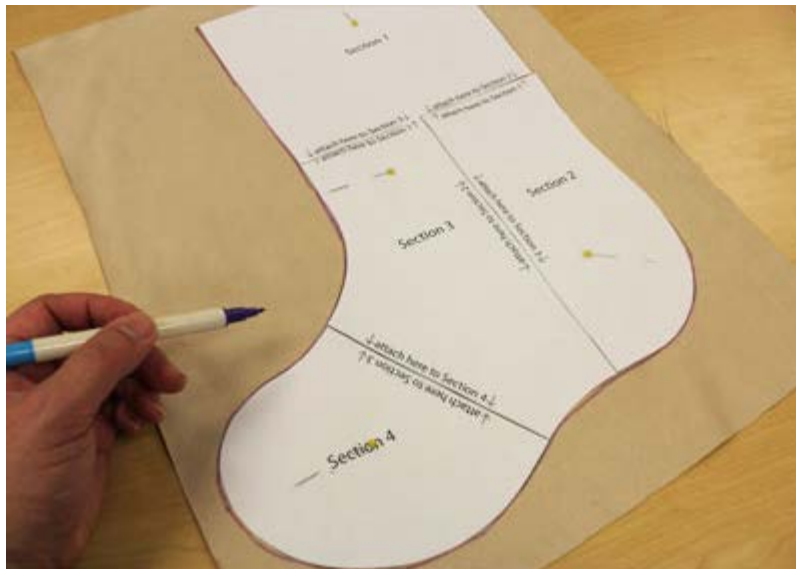
---

To get started, print the [PDF of the stocking pattern](#). The pattern consists of 4 pieces, and each will print on an 8 1/2" by 11" piece of paper.

---



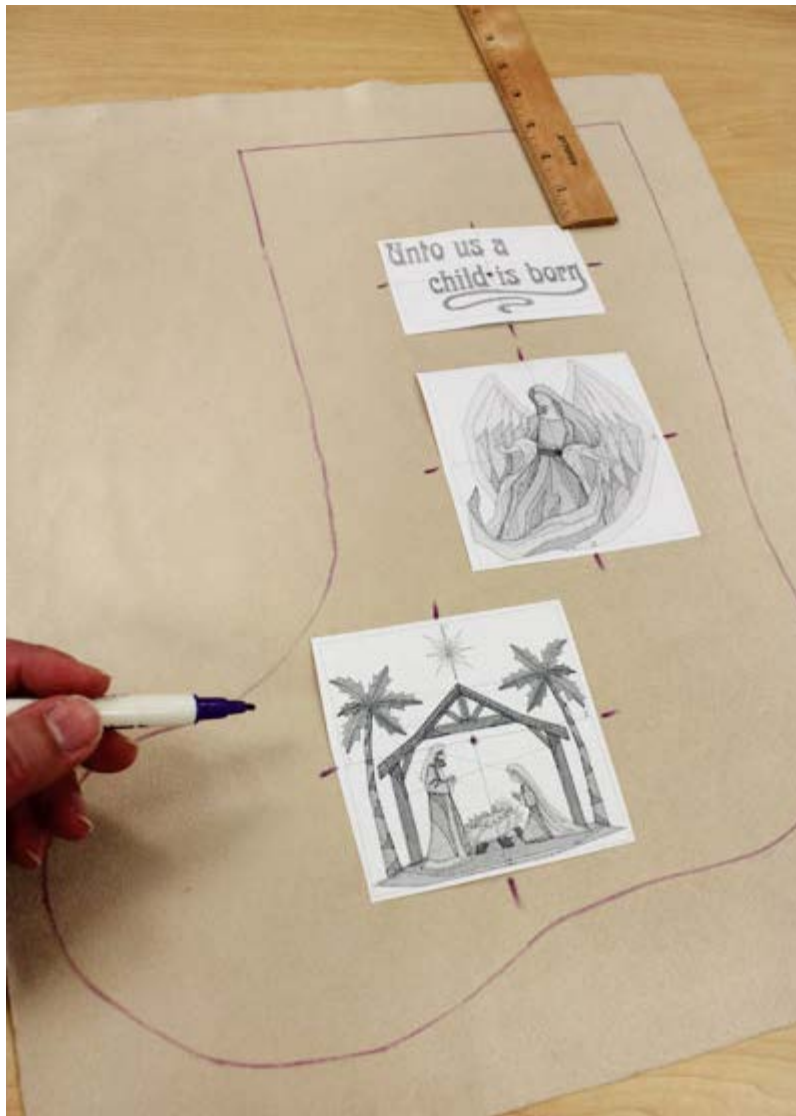
Cut out the pieces and tape them together.



Pin the pattern to the faux suede and trace the stocking shape.

Templates are printouts of embroidery designs, and they are excellent tools for planning where to stitch.

Open the embroidery designs in embroidery software and print them to make templates. If you don't have software, try [Wilcom's TrueSizer](#), a free program.



Arrange the templates on the fabric to determine where you want to stitch them.

Arrange the designs so that the outer edges are at least 3/4" from the outer edges of the stocking shape. Leave about 1" between each design.

Leave at least 3" between the top edge of the top design and the top of the stocking. This allows space for the seam allowance and ribbon trim that will be added later.

For each design template, mark the center point and the vertical and horizontal axis lines. Those marks will be used when hooping.



Spray cutaway stabilizer with a quick shot of temporary adhesive. Smooth the faux suede on top.

Hoop the faux suede and stabilizer together to stitch the first design. Align the marks on the fabric with the marks on the hoop.





Load the design to your machine and move the hoop so the needle is right over the center point.

Embroider the design.



Rehoop the fabric to stitch the next design, and the next.



After embroidering, trim the stabilizer away from the back. Leave about 1/2" of stabilizer around the design.

Then, cut out the stocking shape.



To prepare the back of the stocking, place a piece of faux suede flat with the right side facing up.

Place the pattern piece on top with the wrong side facing up.

Pin in place, trace the shape, and cut out the stocking shape.

Align the back piece on top of the embroidered front piece, right sides together.

Pin in place and sew a 1/4" seam along the side and bottom edges only. Leave the top open for turning. Turn the fabric right side out.



To add the ribbon trim, cut a 16" length of 1 1/2" wide ribbon.

Fold one end of the ribbon over 1/2" and align it with one of the side seams.

Pin the ribbon in place all the way around the top edge of the fabric, leaving 3/4" between the top edge of the ribbon and the top edge of the stocking.

Tuck the raw end of the ribbon under the folded end. Sew a 1/8" seam along the top and bottom edges of the ribbon.

The outer shell portion of the stocking is now complete.

---

Next, prepare the inner lining from the quilter's cotton.

Place the quilter's cotton flat and put the paper pattern piece on top, right side up. Trace the shape, and cut it out.



Then, place another piece of quilter's cotton flat and put the paper pattern piece on top, right side down. Trace the shape and cut it out.

Align the fabric pieces together, right sides together. Pin in place. Sew a 1/4" seam along the side and bottom edges only. Leave the top edge open.



Insert the outer shell inside the inner lining, right sides together. Align the side seams and top edges together.





Cut a 10" piece of 1/2" wide ribbon for the loop.

Form the ribbon into a loop and insert it between the layers of fabric at the top edge of the stocking at the back edge.

Allow about 1/2" of the raw ends of the ribbon to extend up past the top edges of the fabric.

Pin in place. Sew a 1/4" seam along the top edge of the fabric, leaving about 4" open along the back edge.



Turn the fabric right side out. Insert the inner lining inside the outer shell.

Turn the fabric of the opening in 1/4" and press around the entire top edge of the stocking. Use a pressing cloth and an iron set on a low setting to prevent the ribbon and fabric from scorching.

Top stitch a 1/8" seam along the entire top edge of the stocking.

Add extra sparkle and shine by applying heat-set crystals to the stocking.



In addition to the Nativity Stocking designs, try telling a holiday story using the [Wise Men Stocking designs](#), the [Santa stocking designs](#), or the [Snowman stocking designs](#).

This project is featured on the [Embroidery Library Pinterest page](#).





Pin it yourself using the "Pin It" button on this page.

---

Questions or comments? Let us know! Send an email to us; the address is [stitch@emblibrary.com](mailto:stitch@emblibrary.com).

---